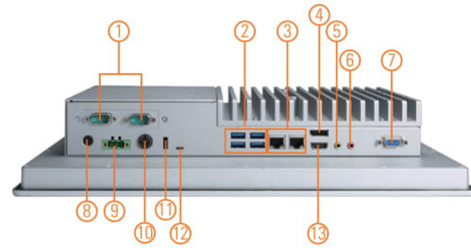
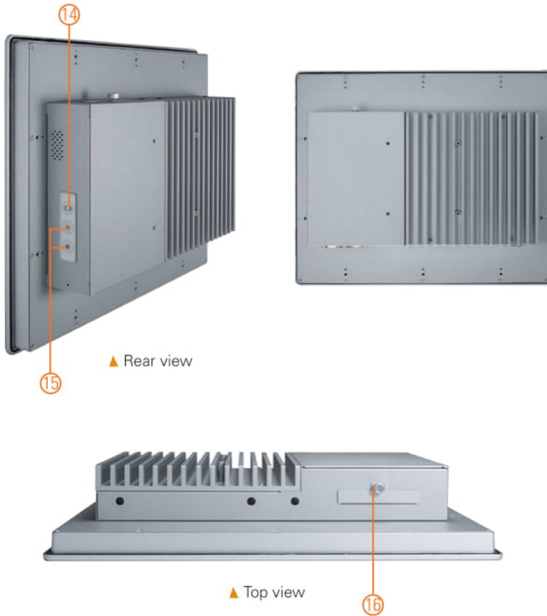
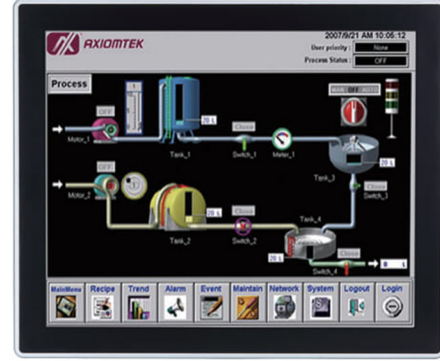


GOT317-502-FR

17" SXGA TFT Expandable Touch Panel Computer with 7th/6th Gen Intel® Core™ i7/i5/i3 Processor (0°C to +40°C)

Features

- 17" SXGA TFT flat resistive touch
- LGA1151 socket 7th/6th gen Intel® Core™ i7/i5/i3, Celeron® & Pentium® processor
- Intel® H110 chipset
- 4 USB 3.0 and 2 COM
- 2.5" SATA HDD and mSATA
- WLAN module & antenna (optional)
- IP65 front bezel
- Supports panel mount and VESA mount (VESA arm/desktop stand/wall mount optional)
- Built-in speakers and removable hard drive design



- | | | |
|--------------------|--------------------------------------|---------------------------|
| 1. 2 x COM (cable) | 7. 1 x VGA (cable) | 13. 1 x HDMI |
| 2. 4 x USB 3.0 | 8. Power button (ATX) | 14. Backlight switch |
| 3. 2 x LAN | 9. Terminal block for DC power input | 15. Brightness adjust +/- |
| 4. 1 x DisplayPort | 10. Power input connector | 16. Swappable HDD |
| 5. 1 x Line-out | 11. Remote power switch port | |
| 6. 1 x Mic-in | 12. AT/ATX selectable switch | |



Introduction

The GOT317-502-FR is a multimedia 17" SXGA touch panel PC for kiosk application. It has a fashionable mechanism design and industrial-grade front bezel which can avoid damage from chemical corrosion. To meet the demands of multimedia application, the GOT317-502-FR is powered by the high performance LGA1151 socket 7th/6th generation Intel® Core™ processor with the Intel® H110 chipset. It features two COM ports, two Gigabit Ethernet and up to 32GB memory of dual-channel DDR4-2400. The industrial touch panel PC is suitable for kiosk and factory automation.

Removable hard drive design

The GOT317-502-FR has designed with removable HDD. User can easily plug in standard 2.5" HDD based on any application needs.

Speaker and WLAN Antenna Supported

The GOT317-502-FR features built-in speakers for kiosk application to display multimedia content. It also supports WLAN module antenna (optional) for wireless network connectivity.

Specifications

Front Bezel	Aluminum w/ IP65/NEMA 4 rugged protection	
LCD Panel	Display Type	17" SXGA TFT LCD
	Brightness	350 nits
	Resolution	1280 x 1024 pixels
	Viewing Angle	160°/140°
Main System	CPU	LGA1151 socket 7th/6th gen Intel® Core™ i7/i5/i3, Celeron® & Pentium® processor
	Chipset	Intel® H110
	System Memory	2 x 260-pin DDR4-2400 SO-DIMM, up to 32GB
	BIOS	AMI UEFI BIOS
	Storage	1 x 2.5" SATA HDD
	Drive	N/A
	Watchdog Timer	255 levels, 1 to 255 sec.

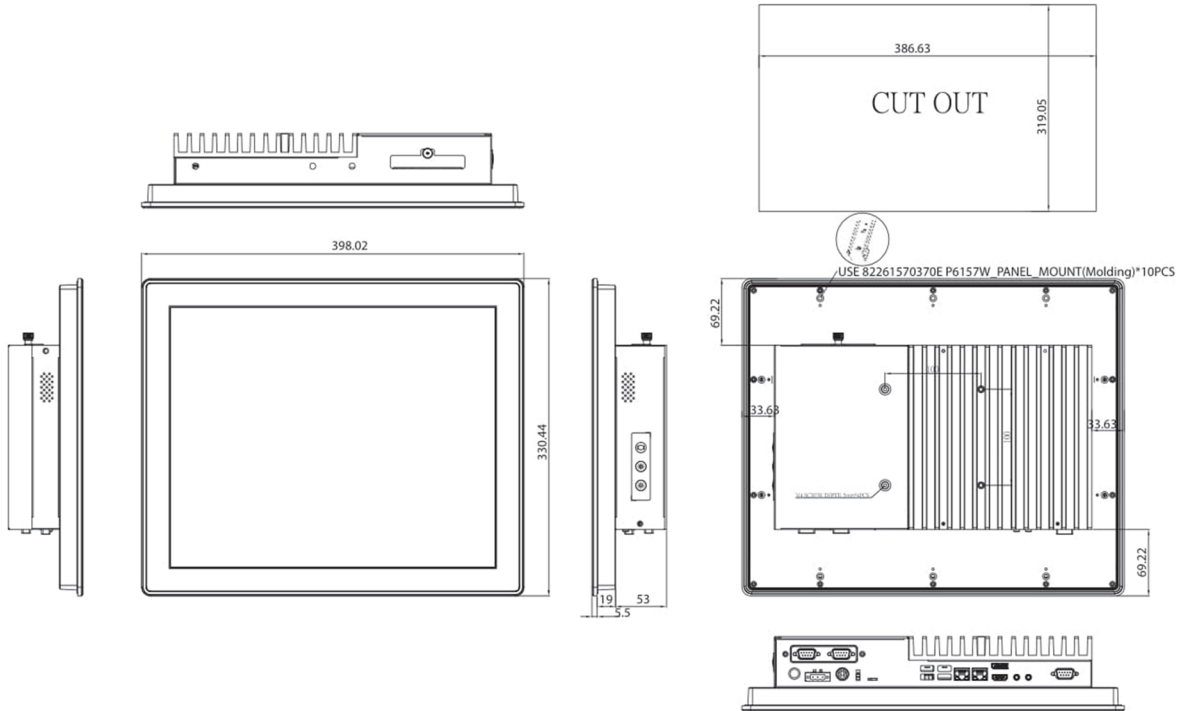
Specifications

IO Connector	2 x RS-232/422/485 1 x HDMI v1.4 1 x VGA (up to 1920 x 1200 60Hz) 1 x DisplayPort v1.2 (DP++) 4 x USB 3.0 2 x 10/100/1000 Mbps Ethernet 1 x Audio (Mic-in/Line-out)
Expansion Interface	1 x Half-size PCI Express Mini Card slot (mPCIe 1) 1 x Full-size PCI Express Mini Card slot (mSATA_mPCIe 2)
Touchscreen	5-wire flat resistive touch
Power Supply	DC terminal block: +12V/+19V/+24V AC adapter: 19V, 6.32A
Power Consumption	120W (include 35W processor)
Dimensions	398.02 mm (15.67") (W) x 77.5 mm (3.05") (D) x 330.44 mm (13.01") (H)
Packing Dimension	510 mm (20.08") (W) x 190 mm (7.48") (D) x 540 mm (21.26") (H)
Weight (net/gross)	6.7 kg (14.77 lb)/9.0 kg (19.84 lb)
Environment	Operating temperature: 0°C to +40°C (+32°F to +104°F) Relative humidity: 10% to 90% @ +40°C, non-considering Operating vibration: 1.0G, 5 to 500Hz, random
Certificate	CE

Packing List

1 x GOT317-502
1 x Driver CD
1 x Phoenix connector
1 x Panel mount kit (by model)
1 x Adapter (by model)

Dimensions



Ordering Information

GOT317-502-FR (P/N: E22B317100) With Adapter and Panel Mount Kit	17" SXGA TFT fanless touch panel computer with LGA1151 socket 7th/6th gen Intel® Core™, Pentium®, Celeron® processor, 5-wire flat resistive touch screen and redundant power input with 1 x terminal block and 1x 4-pin din connector
GOT317-502-FR-DC (P/N: E22B317101) W/O Adapter and Panel Mount Kit	17" SXGA TFT fanless touch panel computer with LGA1151 socket 7th/6th gen Intel® Core™, Pentium®, Celeron® processor, 5-wire flat resistive touch screen and redundant power input with 1 x terminal block and 1x 4-pin din connector

* Other configuration by request

* Specification and certifications may vary based on different requirements

Optional Accessories

4G LTE Kit	
Wi-Fi Kit	
Wi-Fi + BT Kit	
881231770A0E	Wall mount kit
881261510A0E	Panel mount kit
50904D24010E	AC adapter 120W 19V/6.32A, FSP120-ABAN3

Optional OS Installation

Windows® 7 32/64-bit, Windows® 8.1 64-bit, Windows® 10 64-bit (Sky Lake)
Windows® 10 64-bit (Kaby Lake)