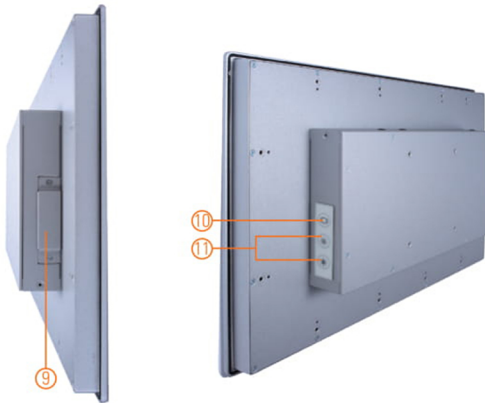
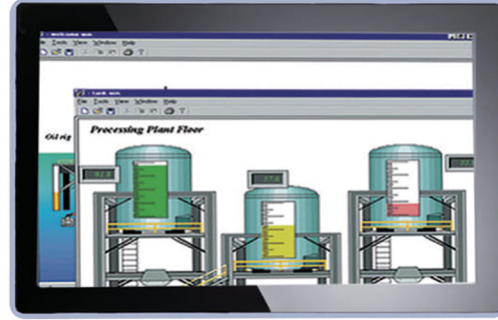


GOT3187WL-834-PCT

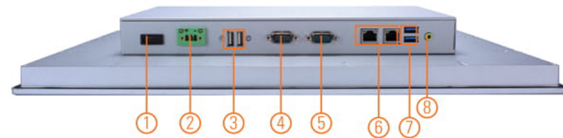
18.5" WXGA TFT Multi-touch Panel Computer with Intel® Celeron® Processor J1900
(0°C to +40°C)

Features

- 18.5" WXGA projected capacitive multi-touch wide screen
- Fanless design with Intel® Celeron® Processor J1900
- 2.5" 7/9.5 mm SATA HDD & CFast™ or mSATA
- 3G, WLAN module & antennas (optional)
- 2 GbE LANs, 2 USB 3.0, 2 USB 2.0 and 2 COM
- IP65 aluminum front bezel
- Supports panel mount and optional VESA arm/desktop stand/wall mount
- 0°C to +40°C wide operating temperature range
- Adjust RS-232/422/485 setting via BIOS



▲ Rear view



1. Power switch
2. Terminal block for DC power input
3. USB 2.0 x 2
4. COM 1 (RS-232/422/485)
5. COM 2 (RS-232/422/485)
6. Ethernet x 2
7. USB 3.0 x 2
8. Audio (Line-out)
9. CFast™
10. Backlight switch
11. Brightness adjustment



Introduction

The GOT3187WL-834-PCT adopts an 18.5-inch WXGA LCD and supports Intel® Bay Trail-D processor. The Lite rugged industrial panel PC supports low power Intel® Celeron® processor J1900. It also provides two PCI Express Mini card slots for 3G, wireless network connectivity. This 18.5" multi-touch panel computer is suitable for transportation, heavy-duty industry, smart factory automation, and oil pipe monitoring systems.

18.5-inch WXGA LCD with Projected Capacitive Multi-touch

The 18.5" WXGA touch panel PC supports 250 nits brightness and can display contents in HD resolution. With projected capacitive multi-touch screen, users can operate the device more directly and friendly. The hardness of touch glass surface is up to 7h for anti-scratch purpose.

WALN Antenna Supported (optional)

The IP65-rated industrial panel PC, GOT3187WL-834-PCT, provides two PCI Express Mini card slots and WLAN antennas for 3G and wireless network connectivity.

Specifications

Front Bezel	IP65 front bezel	
LCD Panel	Display Type	18.5" WXGA TFT LCD
	Brightness (cd/m ²)	250 nits
	Resolution	1366 x 768
Main System	CPU	Intel® Celeron® processor J1900 4C@2.0GHz (Bay Trail-D)
	Chipset	SoC Integrated
	System Memory	1 x 204-pin DDR3L-1333/1600 SO-DIMM, up to 8GB
	BIOS	AMI UEFI BIOS
	Storage	1 x 2.5" 7/9.5 mm SATA HDD 1 x CFast™ or 1 x mSATA
	Watchdog Timer	255 levels, 0 to 255 sec.
	Onboard Graphics	Integrated Intel® HD Graphics

Specifications

I/O Connector	2 x RS-232/422/485 (COM 1/2) 1 x switch for power on/off (ATX) 1 x audio (Line-out) 2 x USB 3.0 2 x USB 2.0 2 x 10/100/1000 Mbps Ethernet (Intel® i210-IT)
TPM	N/A
Expansion Interface	1 x full-size PCI Express Mini Card slot with mSATA 1 x full-size PCI Express Mini Card slot with SIM
Touchscreen	Projected capacitive multi-touch
Power Supply	1. DC version: 12 to 36 VDC 2. AC version: 12 VDC 60W adapter
Power Consumption	48 W
Dimensions	460.8 mm (18.11") (W) x 58.5 mm (2.3") (D) x 285 mm (11.22") (H)
Packing Dimensions	600 mm (23.58") (W) x 195 mm (7.67") (D) x 500 mm (19.68") (H)
Weight (net/gross)	5.8 kg (12.8 lb)/8.2 kg (18.1 lb)
Environment	Operating temperature: 0°C to +40°C (+32°F to +104°F) Relative humidity: 20% to 90% @ +40°C; non-condensing Operation vibration: 1G, 10 to 500 Hz, random for CFast™
Certificate	CE

Packing List

1 x GOT3187WL-834-PCT
1 x Driver CD
1 x Adapter (GOT3187WL-834-PCT-J)
1 x Phoenix connector (GOT3187WL-834-PCT-DC, 12 to 36 VDC)
1 x Panel mount kit

Ordering Information

GOT3187WL-834-PCT-J	18.5" WXGA TFT fanless touch panel computer with Intel® Celeron® J1900 2.0 GHz quad core processor, projected capacitive multi-touch screen and AC-DC 12 VDC power adapter (screw type connector)
GOT3187WL-834-PCT-DC	18.5" WXGA TFT fanless touch panel computer with Intel® Celeron® J1900 2.0 GHz quad core processor, projected capacitive multi-touch screen and 12 to 36 VDC terminal block connector

Optional Accessories

Wi-Fi	
82231770050E	GOT3177T-834 wall mount kit
50906D24000E	Adaptor 24V/120W, wire only, FSP120-AAAN3 (for DC model)

Optional EOS Installation

WE8S	
WES 7	
Windows® 10 IoT Enterprise	

Optional OS Installation

Windows® 8.1	
Windows® 7	
Windows® 10	



▲ Ideal for factory automation & self-service kiosk in retail

Dimensions

